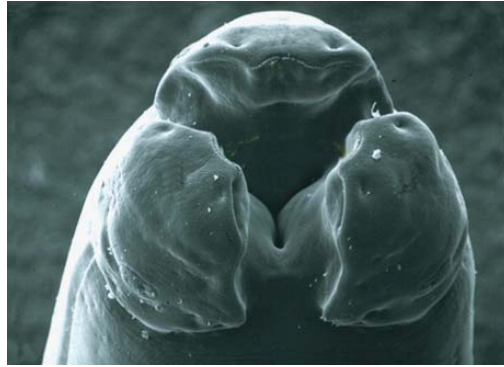
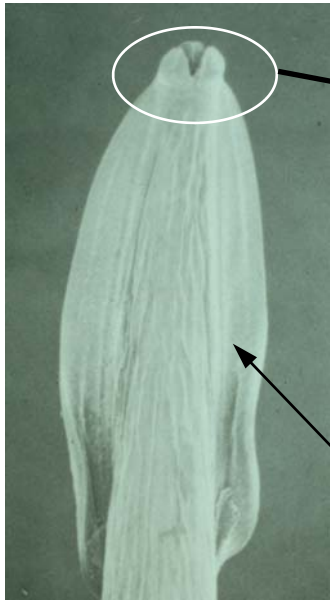




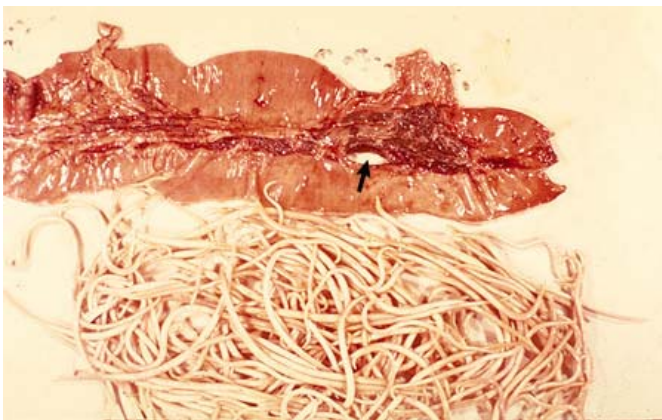
The Ascarids

"Stout, white worms"
principally affecting
horses, pigs, dogs & cats.



The three-lipped mouth is characteristic of this group of nematodes.

Some have cervical alae which are used to distinguish between genera and species e.g. *Toxocara* & *Toxascaris*



A ruptured foal intestine
resulting from a massive
infestation with
Parascaris equorum.

The arrow indicates the
site of the rupture