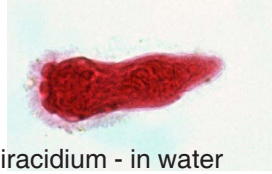


Trematode flukes

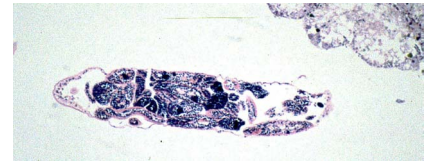
Fasciola sheep liver fluke life cycle.



egg - laid in sheep faeces



miracidium - in water



sporocyst , contains developing sporocysts, infects snail



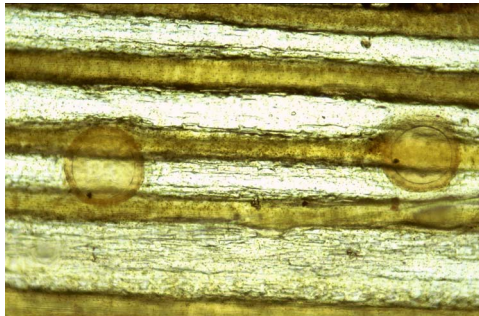
redia , contains developing cercaria - infects snail



Lymnaea snail - intermediate host



cercaria - in water



metacercaria - stuck on vegetation



adult flukes - from bile duct of sheep final host

Dicrocoelium dendriticum flukes, infect sheep liver. Stained fluke on left, fresh flukes on right. These are much smaller than *Fasciola hepatica*, shown above - both scales are in millimetres.

