

Cestode tapeworms - 2

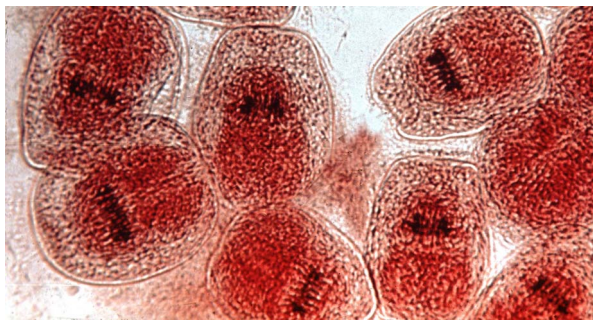
Echinococcus granulosus tapeworm of dogs as final host of adults, and ruminants as intermediate host of larvae



hydatid cyst in lung



cross section of hydatid cysts in lung



hydatid sand - the protoscolices that form in the hydatid cysts. Infective for the final host.



adult tapeworm, a stained specimen - these are only 6mm long and have only three proglottids

Anoplocephala perfoliata adult from horse



Moniezia expansa - proglottids of adult from sheep - stained specimen



Dipylidium caninum larval cyst. Cysticeroid type of cyst, a small solid form that develops in fleas and lice of dogs as the intermediate host.



Dipylidium caninum adult from dog. A small tapeworm.

