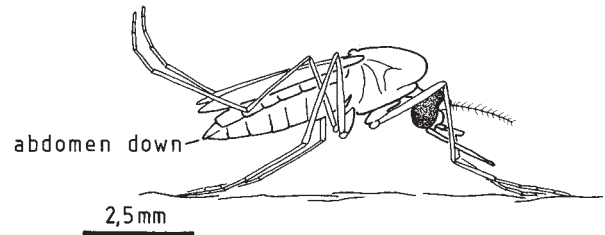


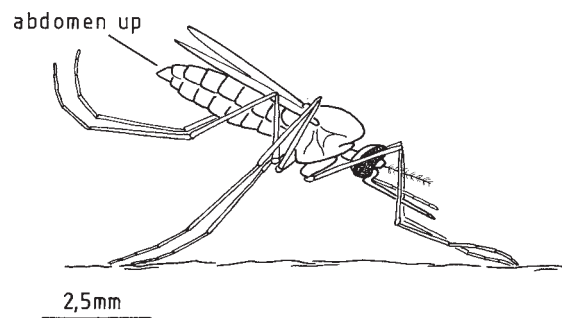
Flies - 2



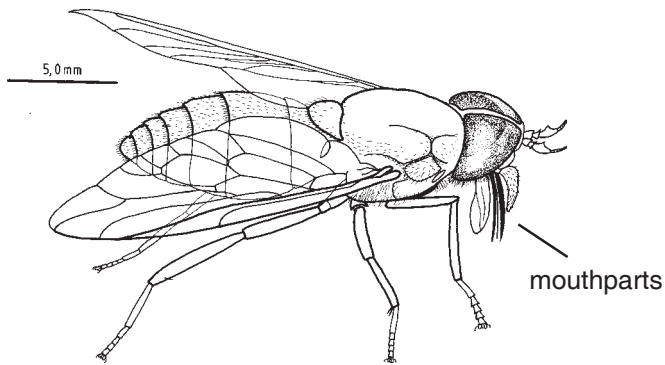
Culex mosquito, a blood sucking dipteran fly. This is a female and it has a very long fine proboscis to penetrate host skin.



Culicine type of mosquito, includes *Culex*, *Aedes* and many other genera of veterinary and medical importance.



Anopheles mosquito, this is the genus which transmits *Plasmodium*, causing malaria in humans.



Tabanus, blood sucking flies of the Brachycera group. Usually known as tabanids, horse flies, clegs etc. There are many other genera in this group. They have very large and complex biting mouthparts, and large eyes for seeking hosts by day.



Melophagus ovinus, the sheep ked. This is a bloodsucking fly in the group Hippoboscidae. Often this type of fly has no wings or lose their wings once they have found a host. They are like large ticks, but have only three pairs of legs and distinct head, thorax and abdomen.