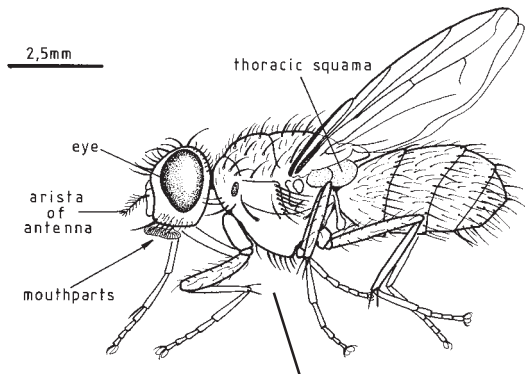
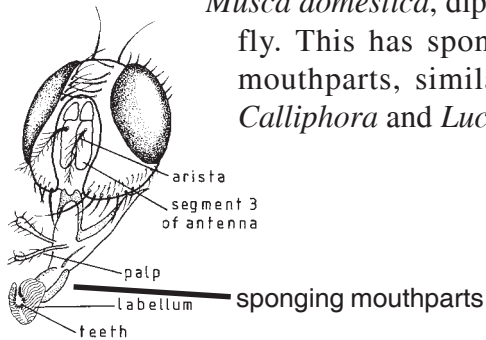


Flies - 1



Musca domestica, dipteran fly. This has sponging mouthparts, similar to *Calliphora* and *Lucilia*.



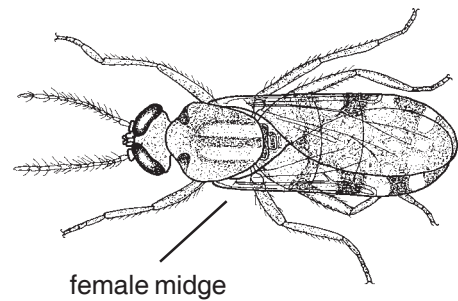
Calliphora dipteran fly mouthparts. These are the sponging type.



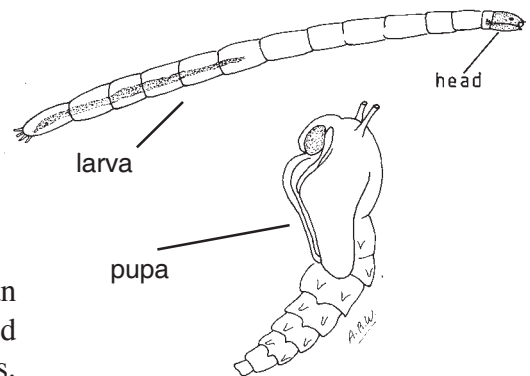
Stomoxys calcitrans, a dipteran fly with a blood sucking proboscis. Both sexes feed on blood.



Culicoides midge, a blood sucking dipteran fly. These are very small, with patterned wings and small but complex mouthparts.



female midge



larva

pupa

head

The larvae and pupae live in wet soil, peat bogs etc.