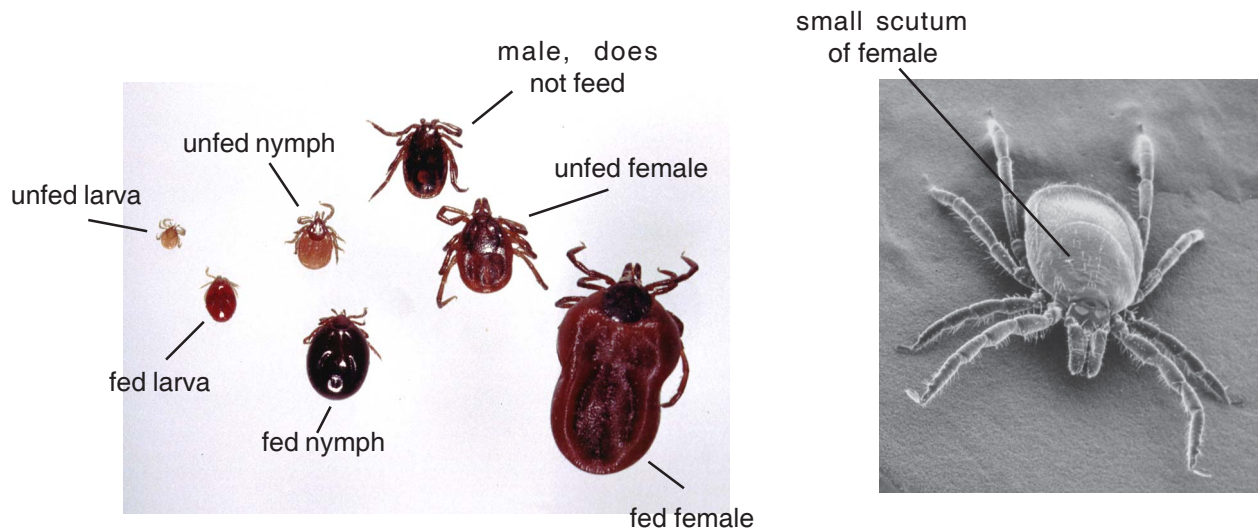
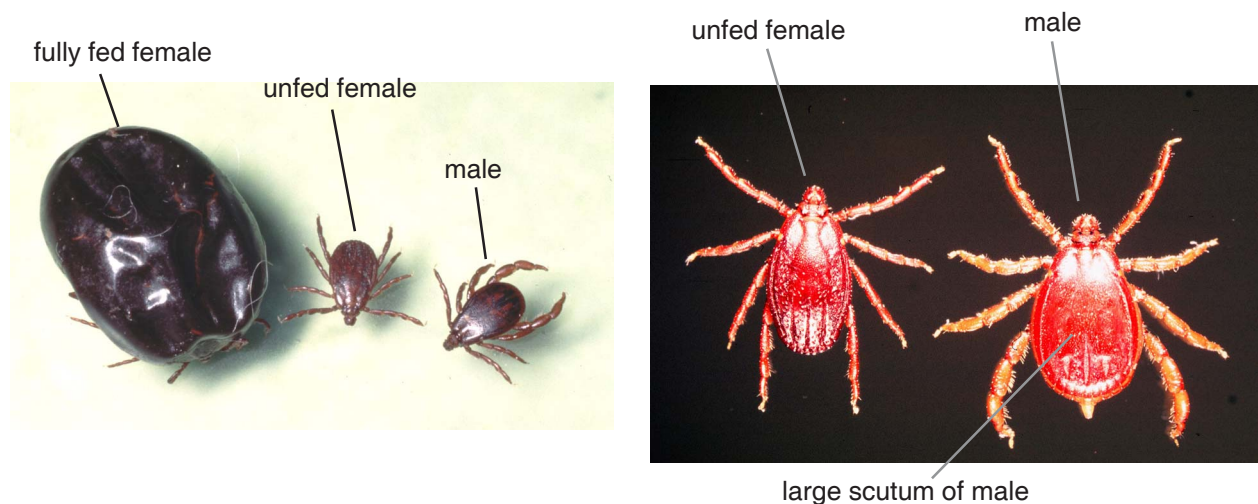


Ticks



Ixodes ricinus, sheep tick or deer tick. Life cycle stages on left, adult female on right. This is the only common tick on livestock in UK. It has a black scutum and legs, and a reddish brown body. The mouthparts of the female are long and conspicuous. Adult females about 3mm long. The males are smaller than the females and have much smaller mouthparts.



Rhipicephalus ticks, typically *R. sanguineus*, the tropical dog tick which is found worldwide on domestic dogs. It has populations as far north as northern France and is found at least temporarily in association with dogs imported into the UK. These ticks are a mid to light brown colour all over, their mouthparts are short, the males are slightly larger than the females and both sexes feed on dogs. The adults are about 4mm long.

Dogs in UK will commonly have *Ixodes ricinus* and the fox tick, *Ixodes canisuga* feeding on them, specially if they have access to land with livestock, deer or foxes on rough grazings.