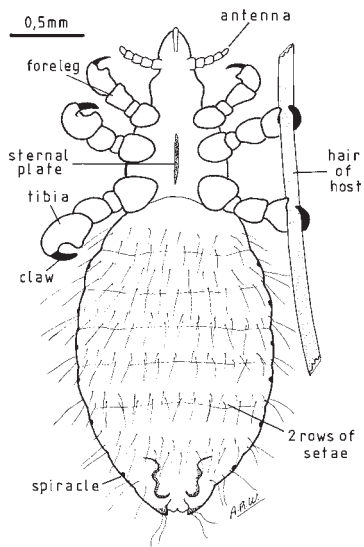
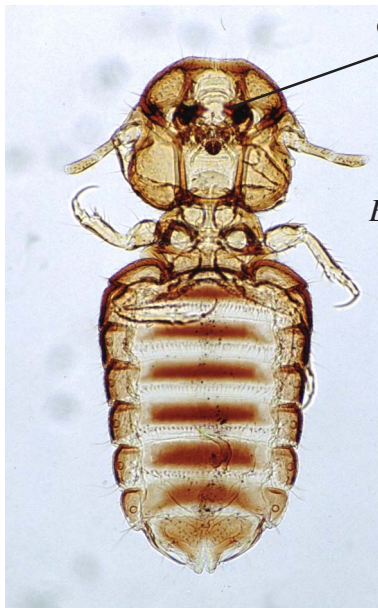


# Lice

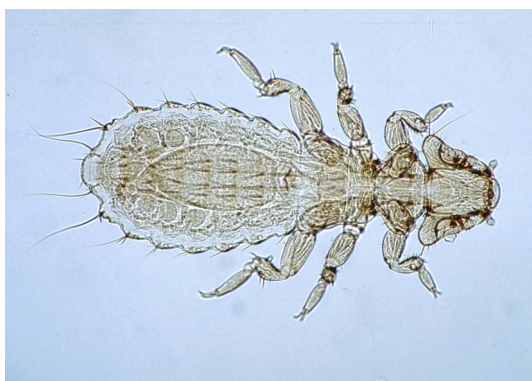


*Linognathus vituli*, the long nosed cattle louse. This is sucking lice in the group Anoplura. Long blood sucking mouthparts are concealed within head when not feeding. The lice cling to hair of host with strong claws on all feet.



chewing mandibles of mouthparts

*Bovicola* (or *Damalinia*) *bovis* of cattle on left and *Trichodectes canis* of dogs on right. These are chewing lice in the group Ischnocera. The mouthparts are visible on the ventral surface of the head and grip onto hair of host.



*Menacanthus stramineus*, the chicken body louse. This is a chewing louse in the group Amblycera. It is different from the Ischnoceran lice in having double claws and a pair of palps near the mandibles of the mouthparts. Birds have only chewing lice of both Ischnocera and Amblycera types.