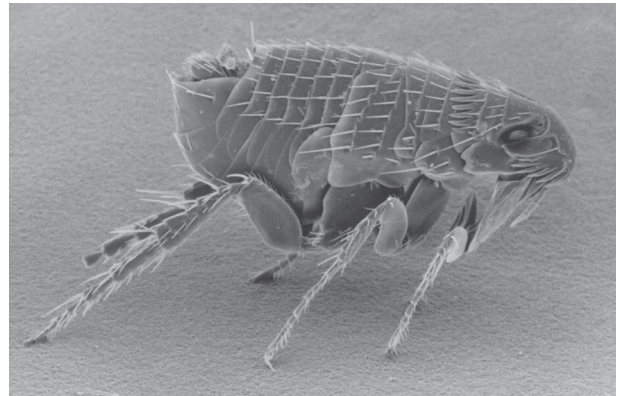
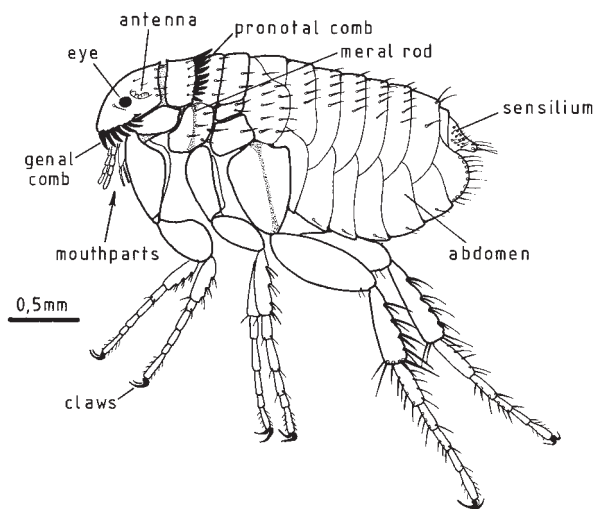


Fleas



Ctenocephalides felis, the cat flea. *Ctenocephalides canis* the dog flea is very similar. These are adult females. Fleas are flattened laterally. They have strong back legs for jumping onto host from the nest of their host. The mouthpart protrude from the ventral surface of the head and penetrate skin of host to feed on blood.

Most fleas found domestically in the UK are *C.felis*, even with infestations on dogs.



Larva of a flea. Fleas have a complete metamorphosis, with larva and pupa stages that are completely different in shape from the adults. The larvae live in nest of the host of the adults.