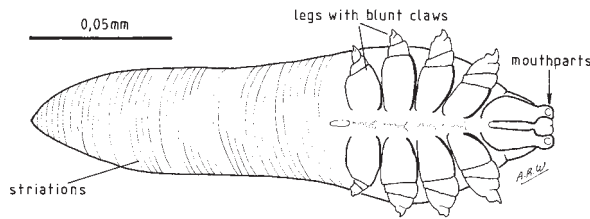
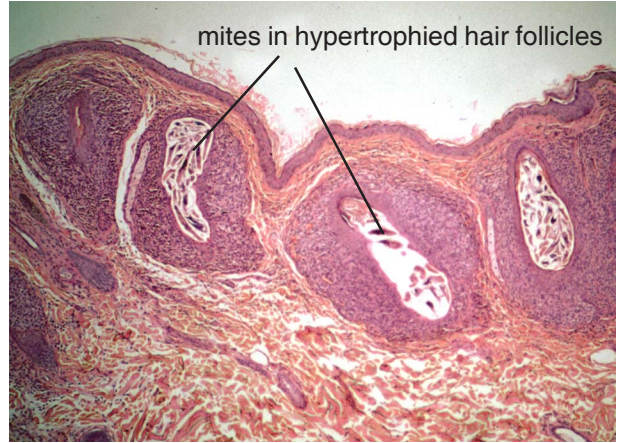
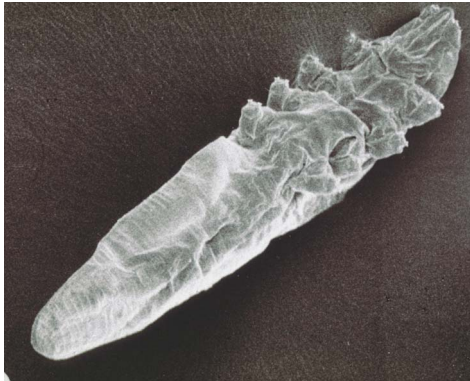


Mites - 2

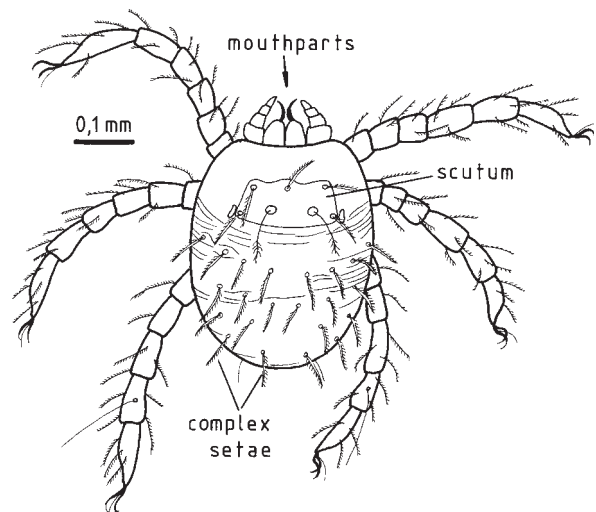


Demodex mite, whole mites on left, section of infested skin above. Characteristics are very small size, elongate shape, short legs and location within hair follicles.

Dermanyssus gallinae, poultry mite. These are large, with long strong legs. They actively move from resting place in poultry housing onto hosts for short feeds.



stylostome feeding tube



Trombicula mite. This is a larva and is the only stage of this mite that feeds on mammals. They have only three pairs of legs as larvae, they are very small, and remain attached to skin surface of host by means of the stylostome which they secrete.