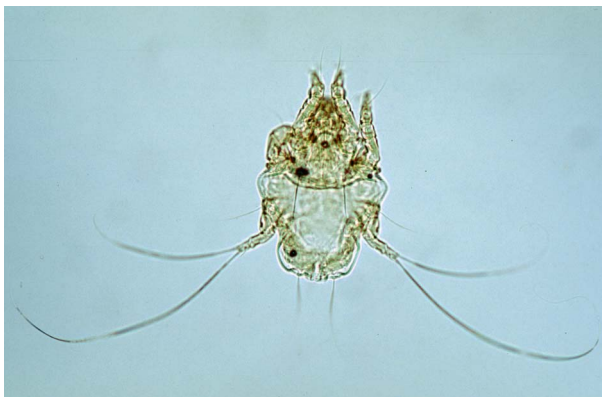
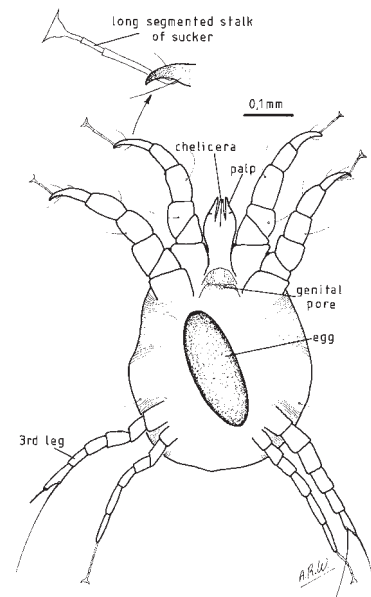


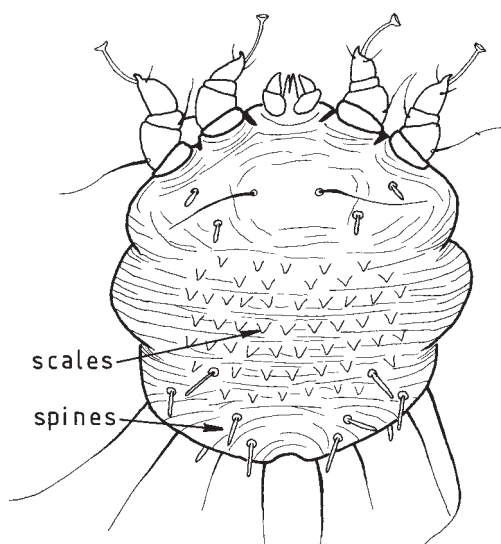
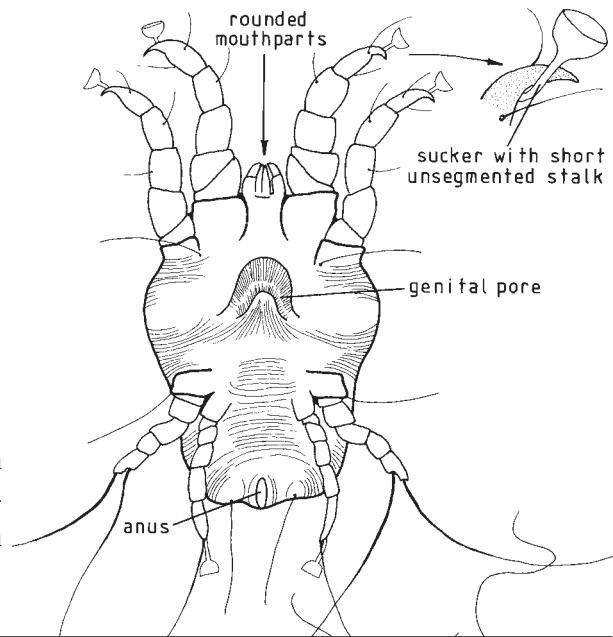
Mites - 1



Psoroptes ovis, the sheep scab mite. These can be seen with the naked eye on skin of sheep. They are characterised by the position on skin, long legs and suckers on long stalks



Chorioptes bovis scab mite, feed superficially on skin of cattle, also on sheep and horse. Differentiated from *Psoroptes* by the large suckers on short stalks.



Sarcoptes scabiei, mange mite. Burrows within epidermis, characterised by very small size, rounded shape, short legs and small mouthparts.